

HOW TO SET UP THE PDA AFTER RESET

Note: If your PDA had reset and Memory Map has disappeared the maps will still be on the storage card

You need:

1. The USB/Power lead for the PDA
2. A PC with a USB port
3. The ActiveSync software – provided on the CD with the PDA. Alternatively download from <http://www.microsoft.com/windowsmobile/en-us/help/synchronize/ActiveSync-download.msp>
4. The Memory Map software

PDA Settings

1. Go to “Start-Settings” and click on “Sound & Notifications”
2. Uncheck the box marked “Events” and click “OK” (top right)
3. Click on the System tab at the bottom and select “Regional Settings”. Change to English (UK) and click “OK”
4. Select “Clock” and set the correct Home time and date.

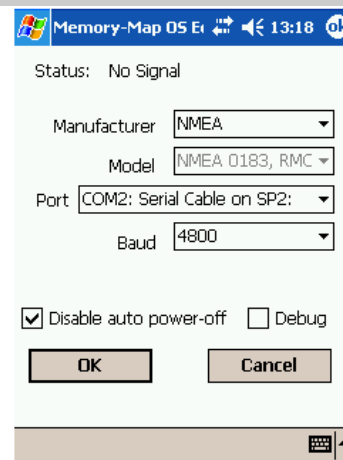
Load Software

1. Install ActiveSync to your laptop/PC from the CD
2. Install Memory Map to your laptop/PC from the CD.
3. Open the Memory Map software, go to Help-Register License and enter the details given at the bottom of these instructions.
4. Plug the PDA into an electrical socket and the USB port of your laptop/PC
5. The computer should detect the PDA and a box should pop-up. Select “Guest” and click OK
6. Open Memory Map (if not already open) and go to PDA-Install Pocket Navigator. Follow the instructions (there may be further instructions on the PDA)
7. Memory Map should now be installed
8. Disconnect the PDA from the laptop/PC

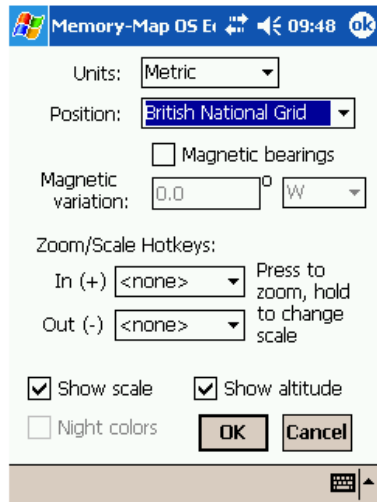
Set up Memory Map

1. Follow the instructions in the following box.

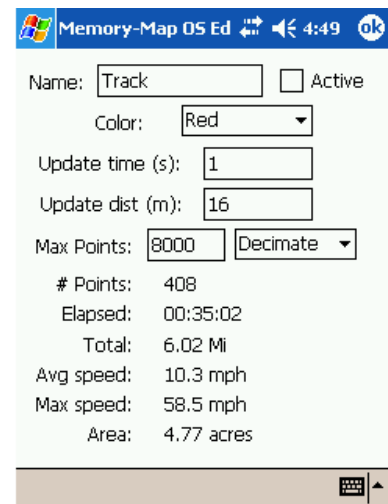
Check the GPS is set up correctly by selecting **Menu-GPS-Setup** and ensuring that ‘**COM8:** is visible in the Port box and ‘**NMEA**’ is visible in the Manufacturer box and **Baud 9600**.



2. Then carry out the instructions in the following box. For Step 2 you need to have travelled a short distance so you have some sort of track visible. Alternatively, go to Explorer and locate the Coventry TEST file in the Root folder of the storage card and double click – a route in Coventry should appear.



Step 1. Tap on **Menu-Overlay-Setting** and check that the settings are the same as those displayed here on the left (Units = Metric, Position = British National Grid). **NOTE: On SOME MACHINES THIS SETTING MAY BE IN MENU-SETTINGS-(UNITS)**



Step 2. Create a small track by driving/walking a short distance or going to **Menu-Overlay-Create New-Track** and drawing on the map. Then hold the pen against the red track line along which you have travelled. After a short time, the box on the right should pop up. Check that the settings are the same as those displayed here on the right (Update time = 1, Update dist = 16, Max Points = 8000) and change them if they are not by holding the pen against the relevant box and using the keyboard at the bottom of the screen.

HOPEFULLY THAT'S IT!!!

Name: PRO USER
Serial: 317A.5A23.3456.437D
Key: AD9E.9FB3.7948.97CB

Licence 4 = Region 2

Licensed User:	Bat Conservation Trust (Enter this name in the License Setup dialog)
Serial Number:	5BAB.0D5C.F39A.F6D4
License Key:	B8A9.AABE.BE46.1255
Expires:	Never

